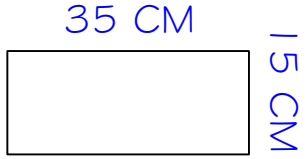
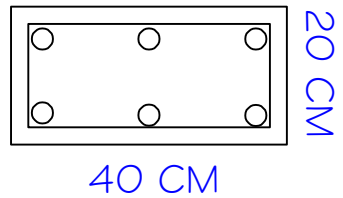
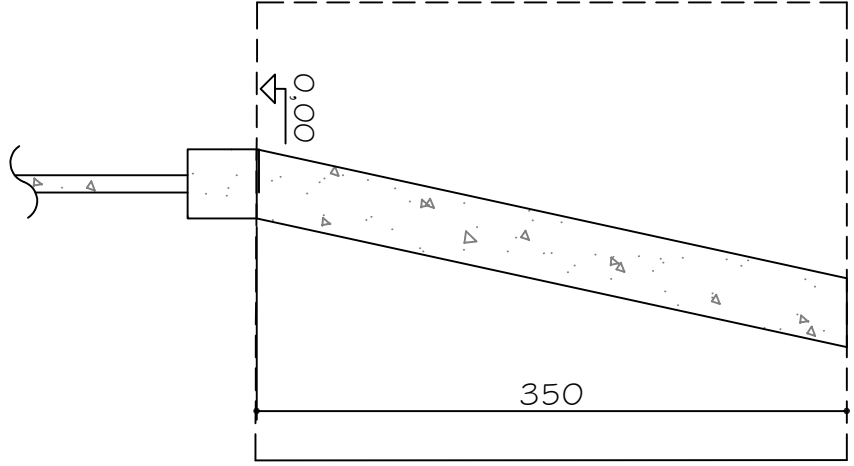


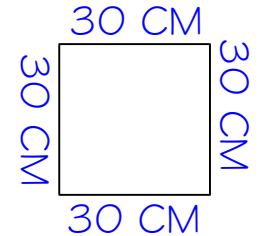
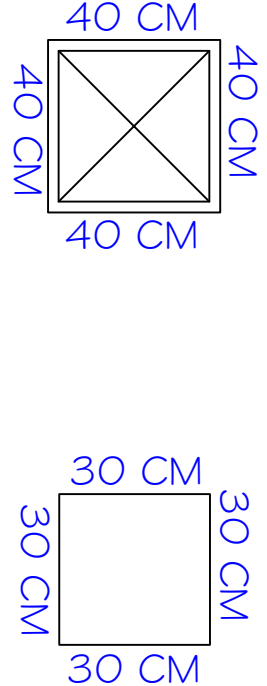
CORTE A-A

ESC 1/100



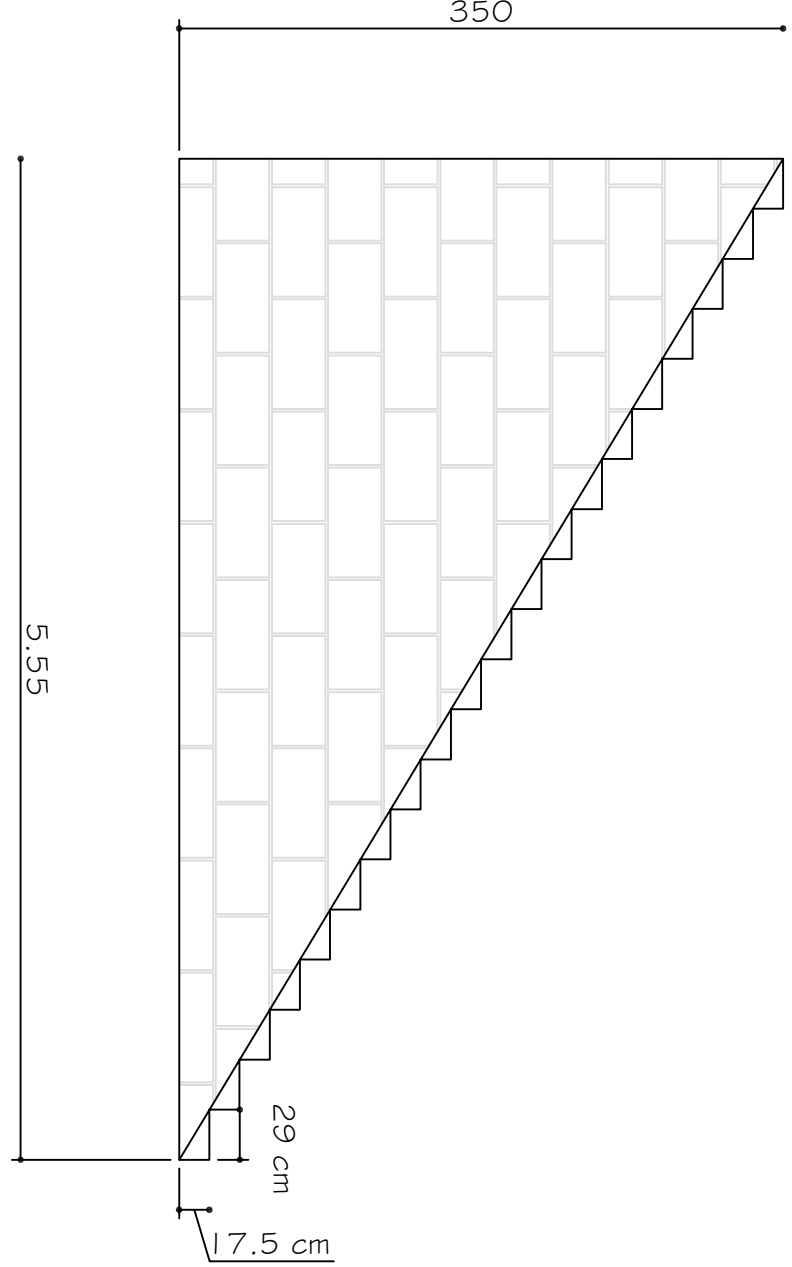
SEÇÃO DOS PILARES

ESC 1/50



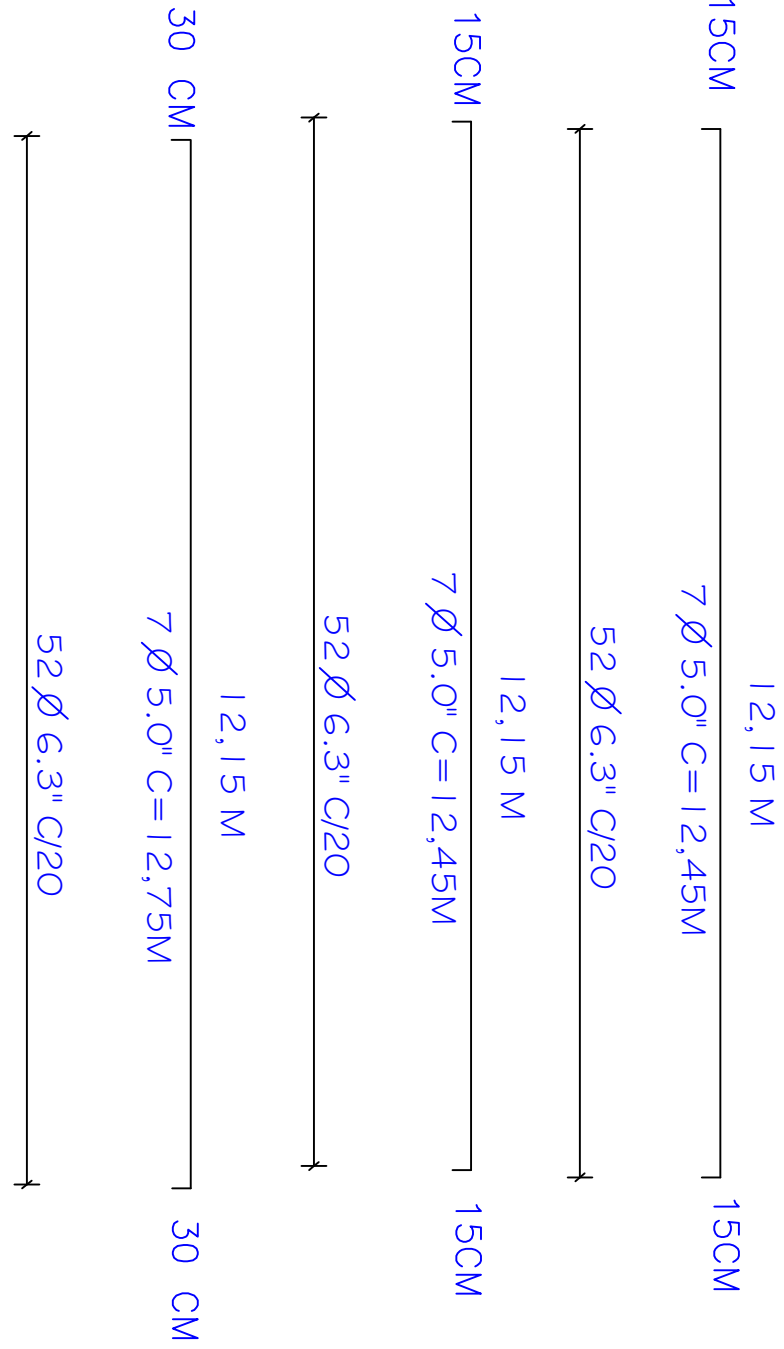
SEÇÃO DOS BLOCOS

ESC 1/50



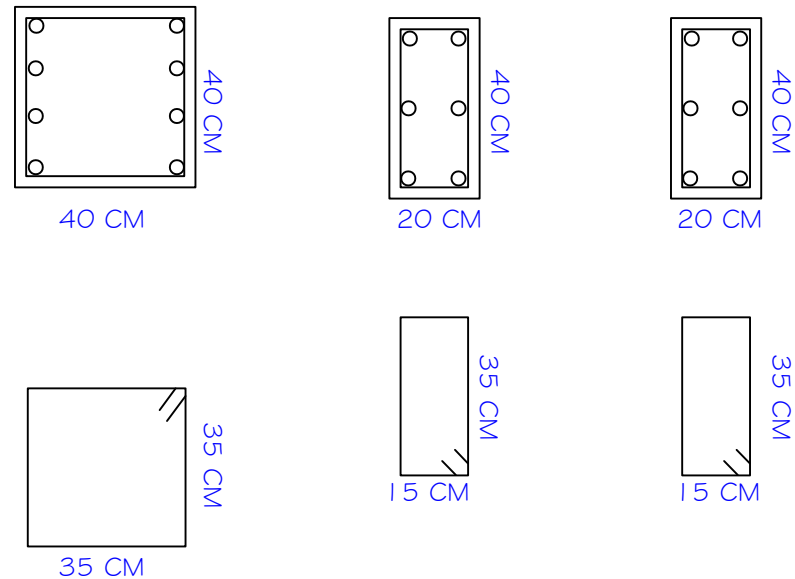
VISTA LATERAL DA ESCADA

ESC 1/100



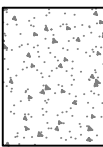
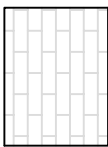

DETALHAMENTO DAS VIGAS

ESC 1/200



SEÇÃO

ESC 1/50

LEGENDA	
	CONCRETO
	ALVENARIA
	BARBAÇÃS
Prefeitura Municipal de João Montevade Secretaria Municipal de Obras	
PROJ.	Prefeito: Dr. Laércio Secretário: GUSTAVO JOSE DIAS MACIEL
USO: Residencial	TÍTULO: PROJETO DE MURO DE ARRIMO
ZONA: ZUD	ENDEREÇO: RUA FELIPE CAMARÃO, Nº283 BAIRRO: LOANDA
ÁREA TERRENO:	PROPR.: Prefeitura Municipal de João Montevade
ÁREA CONSTRUIDA:	
COEFICIENTE APROVEITAMENTO:	
DESENHO:	
DATA:	R.T.: Júlio Bruno Leite Júnior - CREA 80.119/D
FOLHA: Única	